

Lake Cumberland



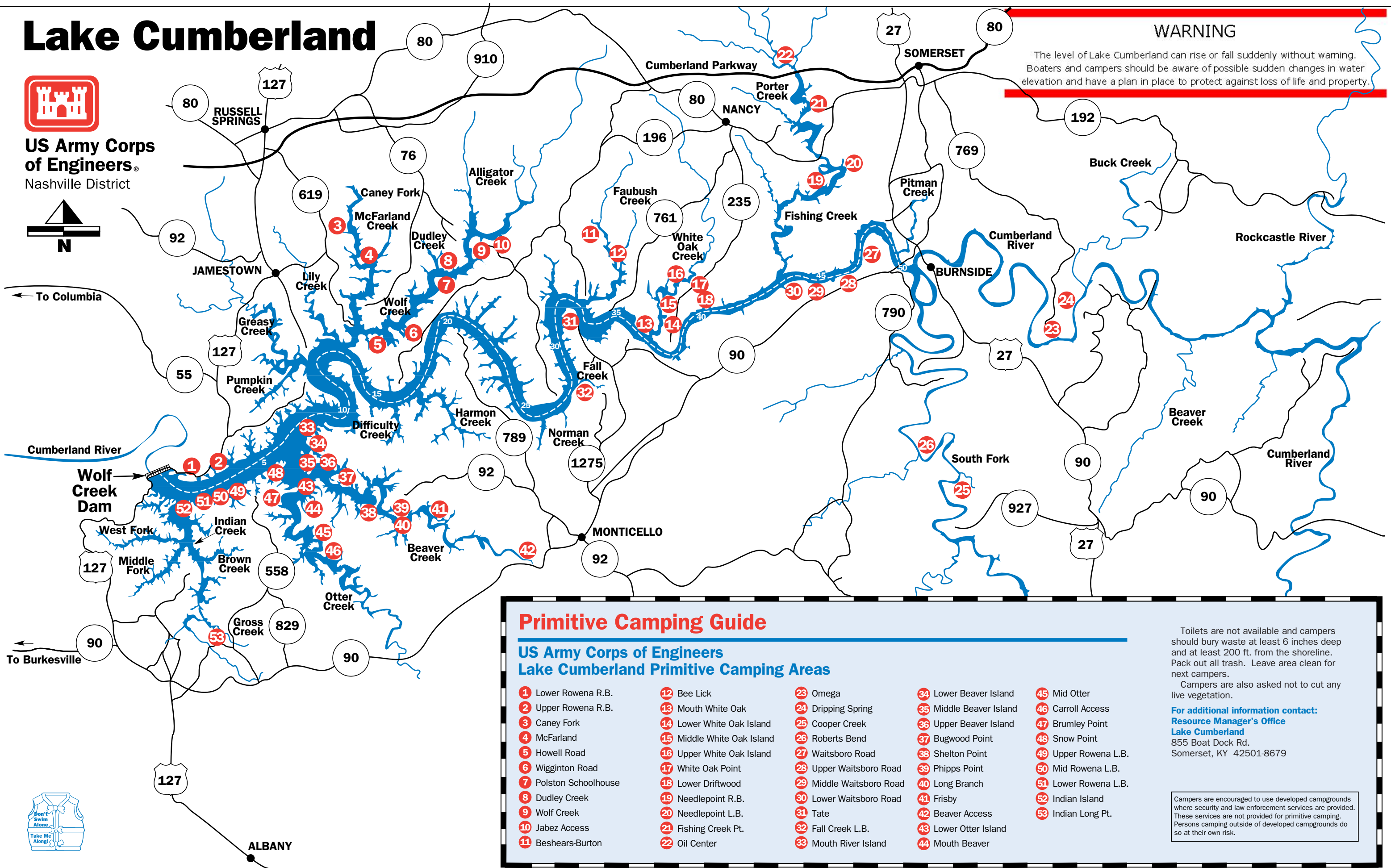
US Army Corps of Engineers
Nashville District



← To Columbia

← To Burkesville

WARNING
The level of Lake Cumberland can rise or fall suddenly without warning. Boaters and campers should be aware of possible sudden changes in water elevation and have a plan in place to protect against loss of life and property.



Primitive Camping Guide

US Army Corps of Engineers Lake Cumberland Primitive Camping Areas

- | | | | | |
|-----------------------|----------------------------|--------------------------|-------------------------|----------------------|
| 1 Lower Rowena R.B. | 12 Bee Lick | 23 Omega | 34 Lower Beaver Island | 45 Mid Otter |
| 2 Upper Rowena R.B. | 13 Mouth White Oak | 24 Dripping Spring | 35 Middle Beaver Island | 46 Carroll Access |
| 3 Caney Fork | 14 Lower White Oak Island | 25 Cooper Creek | 36 Upper Beaver Island | 47 Brumley Point |
| 4 McFarland | 15 Middle White Oak Island | 26 Roberts Bend | 37 Bugwood Point | 48 Snow Point |
| 5 Howell Road | 16 Upper White Oak Island | 27 Waitsboro Road | 38 Shelton Point | 49 Upper Rowena L.B. |
| 6 Wigginton Road | 17 White Oak Point | 28 Upper Waitsboro Road | 39 Phipps Point | 50 Mid Rowena L.B. |
| 7 Polston Schoolhouse | 18 Lower Driftwood | 29 Middle Waitsboro Road | 40 Long Branch | 51 Lower Rowena L.B. |
| 8 Dudley Creek | 19 Needlepoint R.B. | 30 Lower Waitsboro Road | 41 Frisby | 52 Indian Island |
| 9 Wolf Creek | 20 Needlepoint L.B. | 31 Tate | 42 Beaver Access | 53 Indian Long Pt. |
| 10 Jabez Access | 21 Fishing Creek Pt. | 32 Fall Creek L.B. | 43 Lower Otter Island | |
| 11 Beshears-Burton | 22 Oil Center | 33 Mouth River Island | 44 Mouth Beaver | |

Toilets are not available and campers should bury waste at least 6 inches deep and at least 200 ft. from the shoreline. Pack out all trash. Leave area clean for next campers.
Campers are also asked not to cut any live vegetation.
For additional information contact:
Resource Manager's Office
Lake Cumberland
855 Boat Dock Rd.
Somerset, KY 42501-8679

Campers are encouraged to use developed campgrounds where security and law enforcement services are provided. These services are not provided for primitive camping. Persons camping outside of developed campgrounds do so at their own risk.

